



2023 Report to the Community



VISION | We imagine a world where all children are healthy, safe, and prepared to build their own futures.

MISSION | KidVantage helps kids reach their full potential tomorrow by meeting basic needs today.



2023: A new reality, a new normal

2023 created a new reality for KidVantage. As we put the pandemic in the rearview mirror (though unfortunately not COVID) we began to see what our new normal was. Folks were excited to start gathering in groups again and our volunteers began to return to our hubs to make sure KidVantage could deliver on its mission. Also, our partner agencies and their providers began to ramp their programs back up to pre-pandemic levels (and more). The joy of being back together again, working to make kids in our community healthier and safer, filled every corner of KidVantage.

One of the things that we noticed almost immediately was that need was increasing throughout our Puget Sound community. Our providers were signing up an unprecedented number of new clients, and these clients were desperately in need of basic, essential items for their kids. And we saw, as various government agencies pulled back on additional pandemic assistance (rental assistance, family tax credits, increased food and medical benefits, etc.) families begin to fall behind again. COVID relief programs hid some of what we've already known, that families in our community struggle to make ends meet in one of the most expensive places in our country to live. As 2023 unfolded they turned to our partners and KidVantage to help make up the difference.

A wonderful bright spot in 2023 was the completion of the remodel in our Issaquah hub space. Long anticipated and funded by generous donations from the community, KidVantage was finally able to add a second ADA accessible bathroom, add a small kitchenette and lounge for our wonderful volunteers. Dedicated in August, the new volunteer lounge allows our amazing, dedicated volunteers to

go someplace that is cool in the summer and warm in the winter, to have a cup of coffee, chat with friends and take a break from their hectic volunteer work. This also gives KidVantage the capacity to host larger groups of volunteers in comfort. Thank you to the many folks who made this happen.



Jack Edgerton
Executive Director

Our hearts were broken on August 20, 2023 with the passing of our beloved founder and constant inspiration Karen Ridlon. Karen's passing gave us another opportunity to reflect on her amazing spirit, kindness and generosity. As we said goodbye, all of the KidVantage family expressed their gratitude and deep affection for not only what Karen had achieved in the world, but also for the love that she showed all of us. Karen's legacy will live on not only in every diaper or can of formula that leaves our distribution hubs, but also in the heart of every child that has been supported by KidVantage over its 33 years.

We closed 2023 with a surge in distributions reflecting community need. Our volunteers and staff met the unprecedented challenge of distributing 8,000 orders in a week with determination. It was a proud moment for KidVantage and one that the children we serve will probably never know about. That's ok. Because we know that because of our incredible volunteers, staff and donors, children became warmer, safer, healthier and happier.

We wouldn't have it any other way.

A handwritten signature in black ink, appearing to read 'Jack Edgerton'.

The legacy of Karen Ridlon



Karen Ridlon • 1949 – 2023 **Founder, KidVantage** **(Eastside Baby Corner)**

Karen founded KidVantage in the spring of 1990. With a few small items, a broken playpen for shelves and an unheated donated storage unit, KidVantage began distributions to public health nurses in Bellevue and Issaquah and to the Issaquah Food Bank.

Because of Karen's tenacity and generous heart, this organization has assisted thousands of children over the last three decades.

Karen passed away August 20, 2023.

Her vision and leadership remain the inspiration for the work we do every day.



The greatest tribute to the invaluable work Karen led for the last three decades is for us to honor her passion and help the countless children in need of her vision:

“ Children deserve to have a healthy start in life because we never know what gifts that child is bringing into the world. It is our responsibility to make sure every child has sufficient nutrition, a secure ride, a safe place to sleep, clothes and books for school, and a family supported by the community. ”

Karen Ridlon

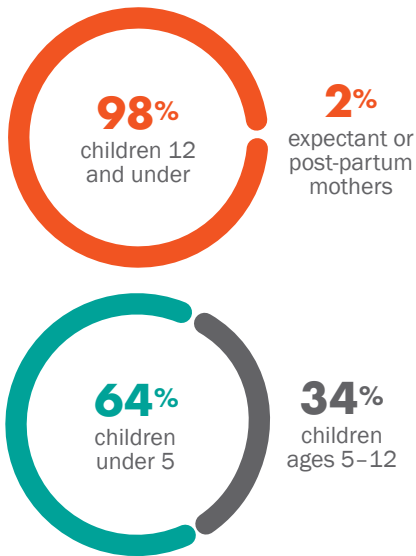


What we did



Orders range from a can of formula to a Big Bundle + (a kit with a week’s clothing, shoes, coat, toothbrush/toothpaste, along with toys, books, and a stuffed animal).

Recipients by the numbers



15,091 standard recipients
 + **2,958** who received assistance through food banks or community resource programs
 = **18,049** total recipients

2023 Distribution highlights

- 2,238 | Car seats
- 4,441,520 | Diaper wipes
- 2,411,395 | Diapers
- 7,888 | Cans of formula
- 48,692 | Toys
- 18,908 | Shoes
- 64,489 | Socks
- 69,600 | Underwear
- 14,199 | Big Bundles
- 31,224 | Personal hygiene products

How well we did it

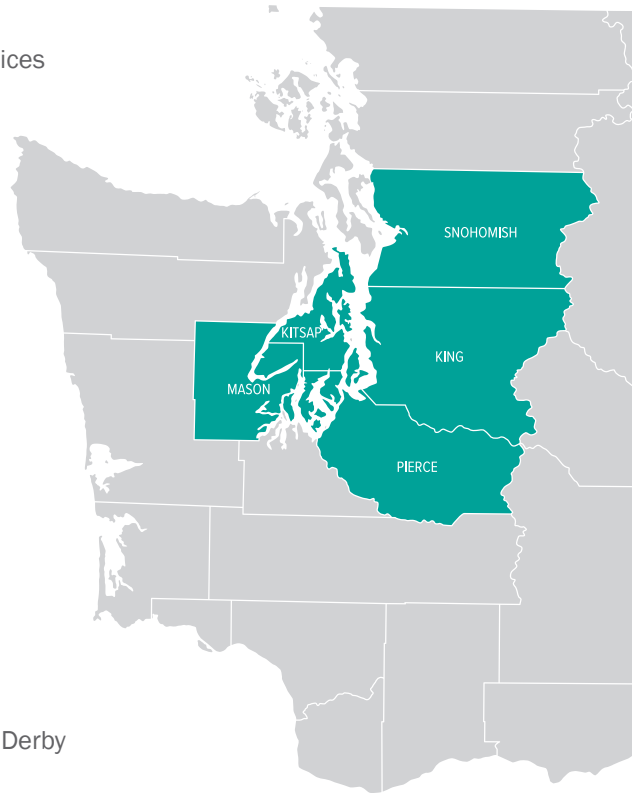


96.7%

of all requested orders were filled!

Where we did it

284	Partner program sites across 5 counties where families accessed KidVantage services
12,124	Recipients in King County
1,245	Recipients in Kitsap County
1,172	Recipients in Snohomish County
486	Recipients in Pierce County
53	Recipients in Mason County



How we did it

23,099	Volunteer hours contributed
4,160	Volunteers
167	Community collection drives
251,386	Items donated through drives and Diaper Derby
83	Partner agencies

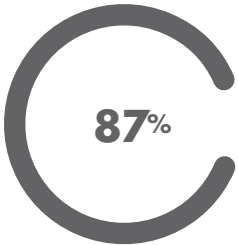
Outcomes snapshot



89% of partner providers surveyed agreed that KidVantage helps create stronger bonds with their clients.



88% of partner providers surveyed agreed that goods from KidVantage help their families be equipped to handle their stressful situations better.



87% of partner providers surveyed agreed that goods from KidVantage help make children in their programs happier.



76% of partner providers surveyed agreed that receiving goods from KidVantage improves health outcomes for their clients.

Types of partner programs

- 5 | Case management
- 7 | Child welfare services
- 5 | Community resource programs
- 9 | Disability services
- 85 | Early learning programs
- 2 | KidVantage special projects
- 16 | Emergency assistance programs
- 2 | Employment/education programs
- 11 | Food banks
- 46 | Housing programs
- 15 | Maternal and infant health programs
- 13 | Medical services
- 2 | Rapid response services
- 6 | Refugee/immigrant assistance programs
- 57 | Schools
- 3 | Specialized services

Revenue and resources

Resources and revenue: \$8,719,834

 **73%** | \$6,341,779

Non-cash (In-kind) donations of products for kids, rent

 **15%** | \$1,285,349

Contributions: individuals, corporations, businesses, civic orgs, clubs and faith based orgs

 **10%** | \$880,966

Government: local cities, county

 **2%** | \$146,680

Foundation and corporate grants

 1% | \$65,060

Interest, referral fees, investments and miscellaneous

Use of resources: \$9,102,430

 **68%** | \$6,211,969

Program non-cash (In-kind) donations of new and used products for kids

 **10%** | \$873,052

Program direct services (safety, nourishment, hygiene, personal care for kids)

 **9%** | \$786,179

Program service and support

 **7%** | \$629,068

Fund development

 **5%** | \$426,954

General administration

 1% | \$129,810

Donated (in-kind) rent

 <1% | \$45,398

Depreciation

2023 highlights

Helping Kids Thrive benefit luncheon



The 2023 luncheon raised \$359,000 through sponsorships, the Giving to Grow Donor Circle, and gifts from the 480 guests at the event.

A speaker's panel of Dan Foster (former Board member and Thrive co-chair), Karen Rubin (longtime volunteer and former Board treasurer), Angela Kennedy (longtime volunteer and former Board president), Sarah Perry (King Council Councilmember, KidVantage supporter), and Diane Kuslich, 2023 KidVantage Board President, was moderated by emcee, Angela Poe Russell. The panelists spoke eloquently about KidVantage, and the theme of "What you give, we give."

The panel was followed by a video honoring Karen Ridlon, our late founder. At the end of the luncheon, Angela Kennedy issued a charge. She challenged attendees to go out into the world and do something that helps someone else, in honor of Karen's guiding principle that we can all make a difference.

We are KidVantage!

2023 was our first full year as KidVantage, after more than 30 years of being known as Eastside Baby Corner (EBC). The new name helps us to better communicate our values, our mission, and the impact we have across Central Puget Sound. Together, we are building a foundation for every kid's future.

I love KidVantage because...

I love seeing our new families light up with joy and relief when they receive that first order from KV. They're the best resources!



Diaper Derby

The annual Diaper Derby is a competitive drive held during the traditional month of horse racing (Kentucky Derby to the Belmont Stakes).

Because of the 37 participants and all of their supporters (see page 11), KidVantage received 127,215 diapers, 34,904 wipes, and over \$11,000 to purchase these items!



Somerset Elementary PTSA members held a donation drive.



Our Pencils & Pants van visit to Bellevue.



Kiewit-Hoffman employees with their Diaper Derby donations.

More than 100 community drives

Clubs, businesses, schools, faith organizations, and individuals across the region “did something to help someone else” in 2023 as they organized 130 drives to collect much-needed goods for kids.

They helped kids be ready for school and ready for school success with school supply and clothing drives during “Pencils & Pants.”

They became “Winter WishGivers,” gathering new toys and winter wear, bringing joy to children during the winter holidays.

They made beautiful quilts, blankets, and winter hats to bring comfort, color, and warmth into kids’ lives.

Staff and leadership

Officers of the Board

Judy Gowdy, President | President, J.C. Interiors Inc.

Diane Kuslich, Vice President/President-Elect | HR Manager, Microsoft

Andrew Symons, Treasurer | Attorney/Shareholder, Inslee, Best – Retired

Nora E. Pardo, Secretary | Systems Analyst, UW Medicine

Board of Directors

Lani Banning
Senior Benefits Business Partner,
Microsoft

Alexandra “Alex” Chasin
Senior International Strategic
Consultant, SAP Concur

Susan Corning
Senior Program Manager,
Amazon

DeAnne Dodson
Community Advocate,
Symetra Financial

Kara Durbin
Director, Clean Energy Strategy,
Puget Sound Energy

Cynthia Hwang
Vice President/Client Advisor,
JP Morgan

Laura Larson
Senior Manager, T-Mobile

Jessica Nevers
Senior Director, Enterprise
Strategy, Grant Thornton

Karen Ridlon
ED Emeritus

Whitney Reparuk
Finance Manager, Amazon.com

Kerry Robinson
Davis Wright Tremaine, Retired

Michele Sauer
Director, Imaging Services &
Central Transport, St. Michael
Medical Center, Virginia Mason
Franciscan Health

Michelle Steffin
Vice President of Finance
Operations, Sono Bello

Diann Strom
Senior Business Program
Manager, Microsoft

Becky Wall
Associate, Rice Fergus Miller

Staff leadership

Jack F. Edgerton
Executive Director

Helen Banks Routon
Director of Development &
Community Relations

Carolina Liendo
Senior Manager of Programs



Special thanks to Rowley Properties...
giving KidVantage a home since 1990.

This year made possible by

Thrive benefit luncheon sponsors

Presenting sponsor



Premier sponsor



Supporting sponsors



Contributing sponsors



Diaper Derby teams

Aegis Living – Queen Anne Galer,
Queen Anne Rodgers Park, Issaquah
Allegro Pediatrics
Allstate Insurance – Mike Gribbin
Banner Bank
BECU
City of Kirkland
Dacels Jewelers
Eastside SDA Fellowship
Gap – Athleta
Homewood Suites by Hilton &
Hilton Garden Inn
Issaquah Montessori School

Issaquah Rotary & Big Block Brewing
James Miller III State Farm Agency
Kari Olson Design
Keller Williams Eastside
Kiewit Infrastructure West Co.
Kiwanis Clubs – Gig Harbor, Issaquah
Max
Microsoft
Nerds to Go
Newport Children’s School
Northwest K9 Sniffers
Peak Sports and Spine – Factoria,
Maply Valley

Rice Fergus Miller
Sammamish Hills Lutheran Church
SAP Concur
St. Andrews Lutheran Church
Swedish Medical Center – Issaquah
Symetra
The Goddard School of Snoqualmie
Treuhaft Homes
Umpqua Bank
University Cooperative School
Village Pediatrics

Grant makers

47th Avenue Foundation
Aven Foundation
Bainbridge Community Foundation
Catherine Holmes Wilkins Charitable
Foundation, Bank of America
Costco Wholesale
Eastside Community Aid Thrift Shop
ELCA Foundation – Shepherd of the
Hills Church Endowment
Ellison Foundation

First Federal, Renton Regional
Community Foundation
First Interstate BancSystem
Foundation
Kitsap Bank
Nick and Michelle Keller Family
Foundation
Rotary Club of Bainbridge Island
Rotary Club of Renton

Schultz Family Foundation
Snoqualmie Tribe
Suquamish Foundation
The National Diaper Bank Network
T-Mobile Foundation
Tulalip Tribes Charitable Contributions
Windermere Foundation
Young Family Foundation

This year made possible by

Businesses and corporations

- 911 Driving School Silverdale
- AAA of Washington
- Able Courier Systems Inc.
- ACT Talent Services
- Amazon
- American Cancer Society Discovery Shop – Bellevue
- Animal Crackers Consignment
- Apostrophe Games
- Banner Bank
- Bellevue Collection
- Blazer Pub
- Bluetooth SIG
- Bombas
- Booginhead
- Care Net Pregnancy & Family Services
- Carter's
- Challenge Northwest LLC
- Charles Schwab, Bellevue
- Childish Things
- Clark Construction
- Costco Wholesale
- Cutter & Buck
- Delivery Express Logistics
- Dorsey & Whitney Trust Company
- Dr. Christian Manley Orthodontics
- Ember Holdings LLC
- Evergreen Ford Lincoln Chevrolet
- Facebook Payments Inc.
- Fifth Generation Inc., Tito's
- Handmade Vodka
- First Tech Federal Credit Union
- Fractal Analytics
- GAP – Athleta Issaquah
- Garth Vance/Children Bilingual Books
- Georgetown Brewing Company
- Give Lively
- Glass House Dance
- Greystar
- HomeStreet Bank Corporate Headquarters
- Injury Law Group NW
- James Miller III State Farm Agency
- Just Between Friends – Issaquah
- Just Between Friends – Monroe
- Kiewit Infrastructure West Co.
- Kimberly-Clark Corporation Costco Team – Strategy and Innova
- Kitsap Bank
- Kumon Math and Reading Center
- Liebertz Plastic Surgery at Yarrow Bay
- MangoApps
- Maple Street LLC DBA Gaslamp Bar & Grill
- Michael's Suburu
- Microsoft Corporation
- NAI Puget Sound Properties
- Navigator Real Estate Services LLC
- Nintendo of America Inc.
- Nothing Bundt Cakes
- NW Sports Physical Therapy
- Old Navy -Woodinville
- Overlake Hospital Medical Center
- Ozz Electric WA Inc.
- Parachute Home
- Peninsula Birth & Baby Expo
- Petsmart
- Puget Sound Energy
- Purkats Unlimited, LLC/Just Between Friends Port Orchard
- Restore Hyper Wellness – Issaquah
- Rice Fergus Miller
- Rowley Properties
- Seattle-Tacoma Box Company
- See Kai Run
- Singletrack Cycles
- Small Threads for Kids
- Snapdoodle Toys
- Solution Partners NW
- St. Michael Medical Center, Family Birth Center
- Stephanie Hunziker Real Estate
- Sugarlump
- Superior Seconds Gear Exchange
- Swedish Medical Center Issaquah
- Symetra Financial
- Target – Issaquah Store #996
- The Blackburn Giving Fund
- The Honey Pot Company
- The Little Gym
- The Sequoias
- Total Quality Logistics
- Trek Issaquah
- Triple XXX Rootbeer Drive-In
- Trophies2Go
- True Martial Arts
- Umpqua Bank, Issaquah Branch
- Universal Martial Arts
- Uplift Climbing
- Village Pediatrics
- Walls of Books
- Washington Holdings
- WE Communications
- Wear A Big Smile Foundation
- White Horse Promotional Products, LLC
- Windermere – Hao Dang Team
- Windermere – Mercer Island
- Windermere Real Estate – Issaquah
- World Doll Day Shows

Community supporters

Alpha Delta Kappa – Alpha Rho Chapter
Bellevue Brain Trust
Bellevue Police Department
Bellevue Sunrise Rotary
Bethany Lutheran Church
Boy Scout Pack 567
Bremerton Central Lions Club/Charitable Foundation
Bright Horizon’s Redmond
COR Church
Creative Sprouts Preschool
Crossroads Bible Church
Day of Service/Church on the Hill
Discovery Elementary School
Eastridge Church
Eastside Community Aid Thrift Shop
Eastside Fire and Rescue
Eastside Fire Rescue Benevolent Fund
Everest Neighborhood Association
Evergreen Academy
Evergreen Beauty College
Evergreen Mennonite Church
Eyas Global Montessori School
Faith Lutheran Church
First Lutheran Church of Richmond Beach
Glass House Dance
Goddard School of Redmond
Goddard School Snoqualmie
Grace Fellowship Church of Kent
Grand Ridge Elementary PTSA
Grassroot Projects
Habitat for Humanity Southcenter Store
Herzl-Ner Tamid
Highlands Council
Indian American Community Services
Inglemoor Cooperative Preschool
International Community School
Issaquah Montessori
Issaquah Valley Elementary
Issaquah Women’s Foundation
James John Audubon Elementary School
Kent Food Bank
Key Peninsula Community Services
Kiddie Academy of Renton
Kirkland Children’s School
Kirkland Police Department
Kitsap County Prosecutor’s Office
Kitsap Quilters Guild
Kiwanis Club of Bremerton
Kiwanis Club of Issaquah
Kiwanis Club of Kirkland
Kiwanis Club of Providence Point
Kiwanis Club of Sammamish
Knights of Columbus #9833 at Mary, Queen of Peace Catholic Church
Knights of Columbus Council 7907, St. Joseph Catholic Church
Labyrinth Home Education Co-op
Lake Sammamish Run Club
Lake Washington High School
Les Lilas French Bilingual Community School
Lincoln High School
Little Minds at Work
Maple Valley Street Rats
MountainView Christian Fellowship
New Day Ministries
Newcastle Library
North Kitsap Baptist Church
Northwest K9 Sniffers
Our Savior Lutheran Church
Peninsula Birth & Baby Expo
Project Linus King County
Project Linus Tukwila Chapter
ReFashion Bainbridge Island
Ronald McDonald House
Rotary Club of Bainbridge Island
Rotary Club of East Bremerton Foundation
Rotary Club of Issaquah
Rotary Club of Kirkland
Rotary Club of Renton
Sammamish Presbyterian Church
Sammamish Youth Board
Sawduster’s Club at Timber Ridge
Seattle Families of Multiples
Shoreline United Methodist Church
Skyline Spartans Lacrosse Club
Snoqualmie Springs School
Somerset Elementary
Soul Connections
Spirit of Peace United Church of Christ
St. Andrew’s Lutheran Church
St. Joseph Catholic Church
St. Joseph School
St. Louise Parish
St. Monica Catholic School
St. Thomas Episcopal Church
Stitch and Serve Kitsap
Stray Threads Quilt Guild
Sunbonnet Sue Quilt Club
Sunny Hills Elementary
Sunset Elementary School
Tam O’Shanter Neighborhood
Tesla Owners Washington
The Bear Creek School
The Little School

This year made possible by

City, county, and state supporters

City of Bellevue	City of Renton	Washington State Department of Agriculture
City of Bonney Lake	City of Sammamish	Washington State Department of Children, Youth & Family
City of Bothell	City of Snoqualmie	Washington State Diaper Program (Department of Commerce)
City of Issaquah	HealthierHere	Washington Traffic Safety Commission
City of Kenmore	King County – Best Starts for Kids	
City of Kent	King County Employee Giving Program	
City of Kirkland	Office of the Secretary of State	
City of North Bend	Combined Fund Drive (CFD)	
City of Redmond		

Corporate matching gift programs

Adobe Inc.	GitHub	Salesforce.com Foundation
Alaska Airlines Foundation	Google, Inc.	SanMar Corporation
Bank of America Charitable Foundation	Hewlett-Packard Company	SAP America
Bill & Melinda Gates Foundation	Liberty Mutual	Starbucks Corporation
BECU	LinkedIn Corporation	Stryker
Boeing	Lumen Technologies	Swinerton
Cadence Design Systems, Inc.	Matthew G. Norton Co.	Symetra Financial
Cambia Health Foundation	Microsoft	T-Mobile USA, Inc.
Cascade Asset Management	Moss Adams LLP	The Pokemon Company International
Costco Wholesale	Nintendo of America, Inc.	Umpqua Bank, Corporate
Dell Giving Program	Nordstrom	UnitedHealth Group
DocuSign	Oracle Corporation	Verizon Wireless
eBay Inc.	Pacific Program Management	Vision Service Plan (VSP)
Gap Corporation	PlayStation Cares	WarnerMedia
Gartner	Russell Investments	DoTopia Wells Fargo

Donor-advised funds (DAFS)

Bank of America	Goldman Sachs Philanthropy Fund	Pledgeling Foundation
Benevity	Grateful Fund	Schwab Charitable
Bright Funds Foundation	J.P. Morgan Charitable Giving Fund	Seattle Foundation
Charities Aid Foundation America	Morgan Stanley	The Troy Foundation
Edward Jones Charitable	National Christian Foundation	Thrivent Donor Advised Fund
Fidelity Charitable	Northwest	Vanguard Charitable
Givinga Foundation Inc.	National Philanthropic Trust	

KidVantage service partners

Afghan Health Initiative
Agapé Unlimited
Attain Housing
Bellevue College
Bellevue School District No. 405
Center for Human Services
Children's Home Society of Washington (Akin)
Children's Therapy Center
ChildStrive
City of Bonney Lake (SP)
Communities in Schools – Renton-Tukwila
Edmonds School District
Encompass
Everett Public Schools
Friends of Youth
Grassroot Projects
HealthPoint
Healthy Habits 4 Life
Holly Ridge Center, Inc
Hopelink
Horn of Africa Services
Imagine Housing
InterCultural Children & Family Services
Iraqi Community Center of Washington
Issaquah Food & Clothing Bank
Issaquah School District #411
Jewish Family Service of Seattle
Kent Youth and Family Services
Kindinger

King County – Department of Community Health Services (DCHS) & Department of Public Health (DPH)
King County Housing Authority
Kitsap Community Resources
Kitsap Immigrant Assistance Center
Kitsap Public Health District
Lake Washington School District 414
Lifewire
Living Well Kent Collaborative
Mamma's Hands
Mary's Place Seattle
Mercer Island Youth & Family Services (City of Mercer Island)
NISO Company
Northshore School District
Olympic Education Service District 114
Overlake Medical Center
Peninsula Community Health Services
Peninsula School District
PNW Conference of the United Methodist Church
Puget Sound Educational Service District
Raging River Community Church
Renewal Food Bank
Renton School District 403
Riverview School District
Salvation Army Northwest Division
Scarlet Road
Seattle Children's Hospital

Seattle Indian Health Board
Shoreline School District
Sky Valley Food Bank
Snoqualmie Tribe
Snoqualmie Valley Food Bank
Society of St. Vincent De Paul Council of the Seattle-King County
Somali Health Board Agency
Step By Step Family Support Center
Swedish Health Services
Tacoma Public Schools
Tahoma School District No. 409
The Hope Festival
Turkish Women Charity and Aid Organization
UW-Valley Medical Center (Public Hospital District 1 of King County)
Vine Maple Place
Vision House
Voices of Tomorrow
Washington State Dept of Children Youth and Families (DCYF)
Way Back Inn Foundation
Youth Eastside Services
YWCA of Kitsap County, Seattle-King-Snohomish County



This year made possible by



Cheryl Grinna bringing hand-made quilts from Faith Lutheran Church in Redmond.



Providers from our Bremerton hub during "Share the Love" week.



Barbara Petsch showing off part of SAP Concur's Kentucky Derby & Triple Crown winning diaper derby haul.



Patti and Richard from Gig Harbor Kiwanis.

Working Together For Kids

How KidVantage gets your donations to local kids who need them...

You, the KidVantage supporter

Donate goods and gear your kids no longer use. Gifts of money are used to buy vital supplies all kids need.



At our Hubs, volunteers sort and organize donations, and prepare them to go back out immediately. When requests for goods are made by partners, volunteers fill those requests within the week.



We reach families through...

- Schools/School Districts
- Early Learning Centers
- Maternal & Infant Support
- Food Banks
- Housing Organizations
- Child Welfare & Foster Care
- Other Government/Non-profit Organizations
- Emergency Assistance & Referral Requests



KidVantage Partners

80+ service partners are in the KidVantage network of health, human services, and education organizations. Through this network, we provide essential care goods to kids and families across Central Puget Sound.



18,000 kids helped annually

Kids & families receive what they need, when they need it. KidVantage fills 97% of the requests received.





P.O. Box 712 | Issaquah, WA | 98027
kidvantage@kidvantenw.org
425.865.0234

KidVantageNW.org



    @KidVantageNW

Issaquah
1510 NW Maple Street
Issaquah, WA

Bremerton
1463 NE Dawn Road
Suite B, Bremerton, WA

Shoreline
17230 12th Avenue NE
Shoreline, WA